



Ronda Webb

Interior Designer

Drawing on her vast experience, Ronda has the ability to “walk in her customer’s shoes” within moments of meeting them. Well versed in the variety of styles, applications and details, she is as comfortable with detailing complex tile layouts as she is with repackaging the functions of a home. Her ability to understand the customers’ wants and needs often before they do, helps to form an immediate and lasting bond of trust. Ronda manages the design department, ensuring material samples are up to date, investing in education about the latest techniques, and overseeing crew development.

Pictorial overview including floor plans of this project is available online at: <http://tenhulzen.com/project/kitchen-exposed-addition/>

Custom Cabinetry

Made from solid maple and plywood. Painted in place to eliminate nail holes and installation marring. Glass doors and shelving for display. Spencer Cabinetry, Monroe, WA

Windows

Hurd white clad casement with paintable interiors, screens and satin nickel hardware. Double doors and side lite windows at master balcony also by Hurd.

Perimeter Countertops

Pental Quartz Belgium Blue with satin finish and eased edge. Raised bar is supported by steel frame attached to 1/2 wall, anchored by cabinetry.

Exterior Doors

Andersen folding outswing system with white clad exterior, paintable interior, multi-point locking system and brushed nickel hardware.

Island Countertop

Pental Brazillian Arabescato polished granite with ogee edge. Selected to look like marble, with the durability of granite. Also selected for laundry room.

Backsplash

Davenport Dove Grey 2”x4” porcelain with Laticrete grout.

Pendant Lighting

Kitchler Armida mini pendant in brushed nickel.



Floors

Oak 3-1/4” plank sanded to raw wood and stained to match Canyon Creek Alder Caraway sample. 3 coats of satin sheen Swedish finish.

Appliances

- Zephyr hood vent
- GE Café Series cooktop
- Kitchen Aid wall ovens
- Kitchen Aid refrigerator

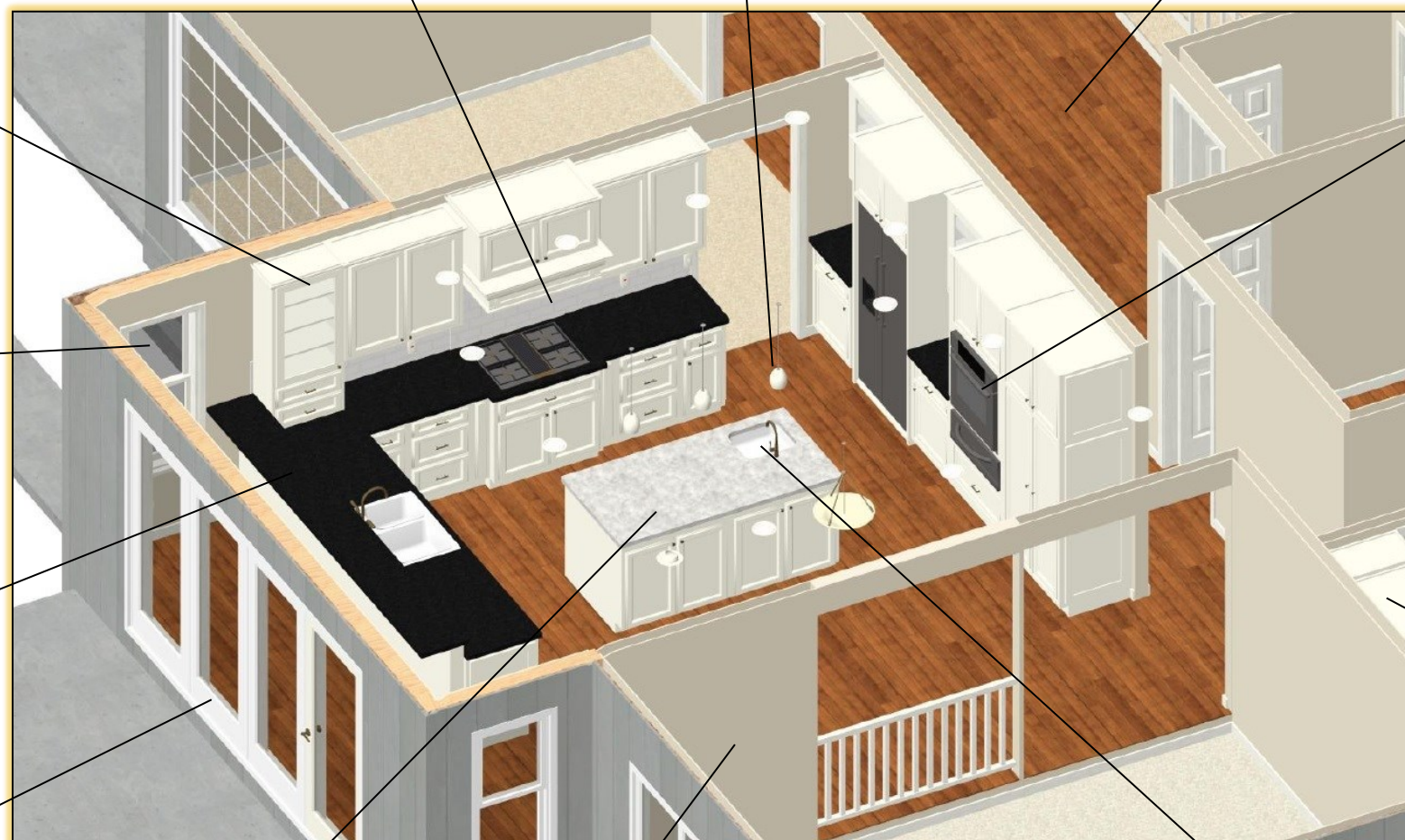


Laundry Room

Full-height pantry cabinetry added in place of living room wet bar, included improving storage and finishes throughout. Interior walls are insulated for sound isolation.

Sinks & Faucets

- Kohler Brookfield main sink w/ Kohler Simplice faucet in vibrant stainless.
- Kohler Napa prep sink w/ Kohler Simplice faucet in vibrant stainless.
- Insinkerator Evolution Septic Assist disposal w/ brushed nickel trim.
- Insinkerator Wave hot & cool dispenser in satin nickel.



Drawings produced in Chief Architect

Roof Balcony

Life deck surface under Trex Transcend Cayenne top fastened into sleepers. Cedar railing painted to integrate with color scheme.



Michael Tenhulzen
CGR, CAPS
Director

Traci Tenhulzen
HST, CGA, CAPS
Executive Producer

TR offers a unique approach to design/build remodeling that focuses on the process required to develop a script. In-house design staff are realistic, adaptable and fiscally responsible. The Design Center is a hub of creativity with current samples of materials tailored to your vision.

Michael is a Redmond native, raised in a family-owned remodeling company with a strong sense of integrity, professionalism and trust. Traci joined after several years of owning her own safety consulting company. The Tenhulzens are active in several Eastside communities.

Putting you in the director's chair for a 4-step interactive process....

Concept phase

Idea | Conceptualization
Budgeting | Storyboarding

Script phase

Scripting | Pre-Production

Production phase

Performance | Editing

Release phase

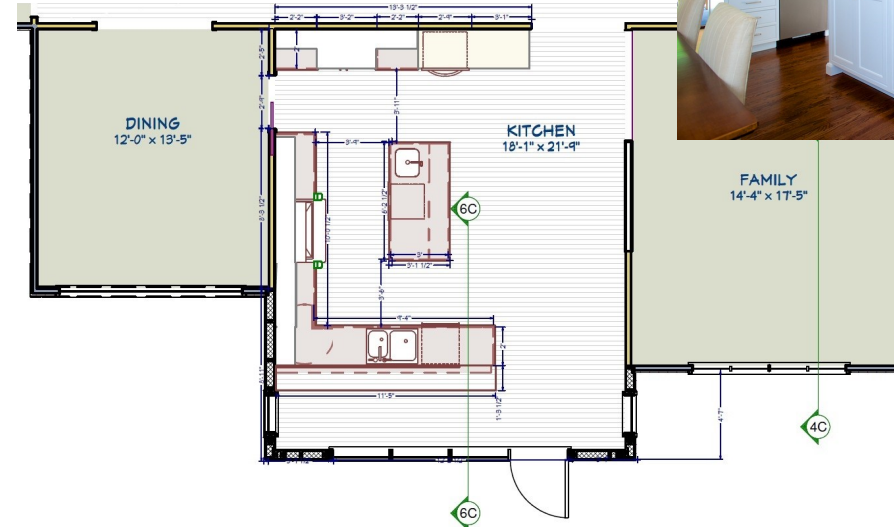
Wrap | Red Carpet | Warranty



Notes:



Remodeled HOMES TOUR 2016



AFTER PLAN
NOT TO SCALE

Kitchen Addition

An 8-foot extension of the main floor allowed for a larger and lighter configuration of primary entertaining area. Accessible by a 12-foot wide folding French door system, the outdoor patio becomes an extension of the new space.

Master Balcony

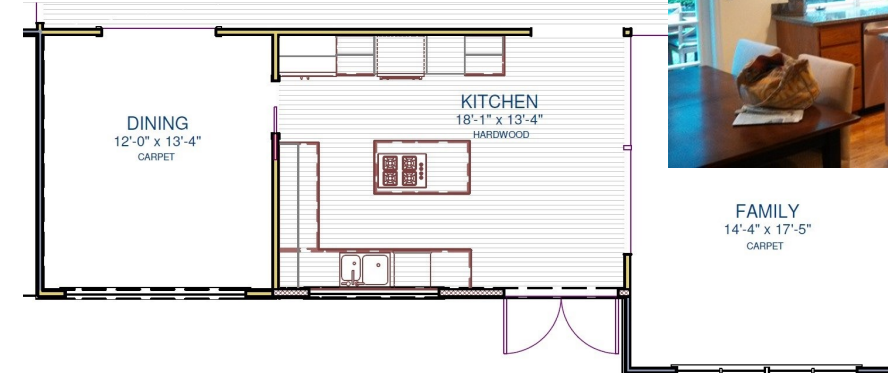
Integrated within the existing roof is a waterproof deck surface designed to enjoy morning tea.

Laundry Room

Lighter and brighter with improved storage and functionality, gaining space from unused wet bar.

Exercise Room

Following completion of the kitchen addition, this sequel is currently under construction.



BEFORE PLAN
NOT TO SCALE



TENHULZEN RESIDENTIAL
DESIGN/BUILD REMODELING

13208 NE 20th St.
Suite 300
Bellevue, WA 98005

425.885.9871
www.tenhulzen.com

